



3150 Livernois Road - Troy, Michigan



OFFICE SPACE FOR LEASE

- Located in Troy's Golden Corridor with Convenient Access to I-75
- Extensive Interior Common Area Renovations with Attractive Granite Lobby & Bathrooms
- Turn-Key Space Available
- Monument Signage Available
- Beautifully Landscaped
- Common Area Break-Room
- Abundant On-Site Parking
- 24-Hour Secure Building Access
- Professionally Managed

FOR LEASE :
UP TO 1,211 SQUARE FEET

VENTURE PLAZA
TROY, MICHIGAN



SUITE DETAILS:

Suite 155: 977 SF

Suite 310: 1,211 SF



For more information, please contact:

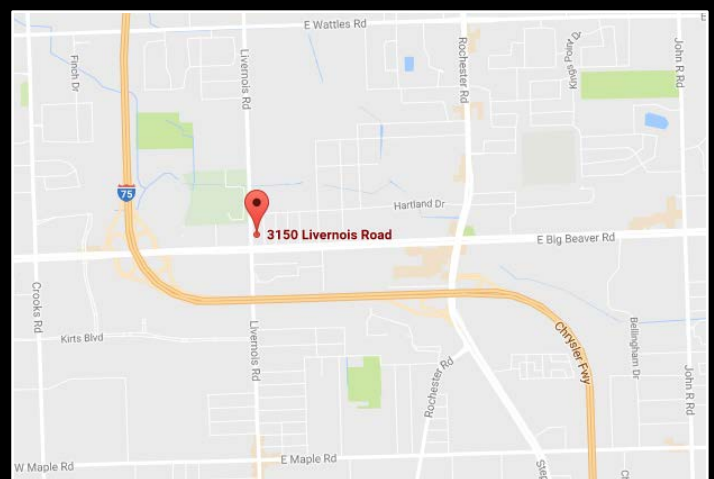
SCOTT MARCUS

Office: 248.645.2600

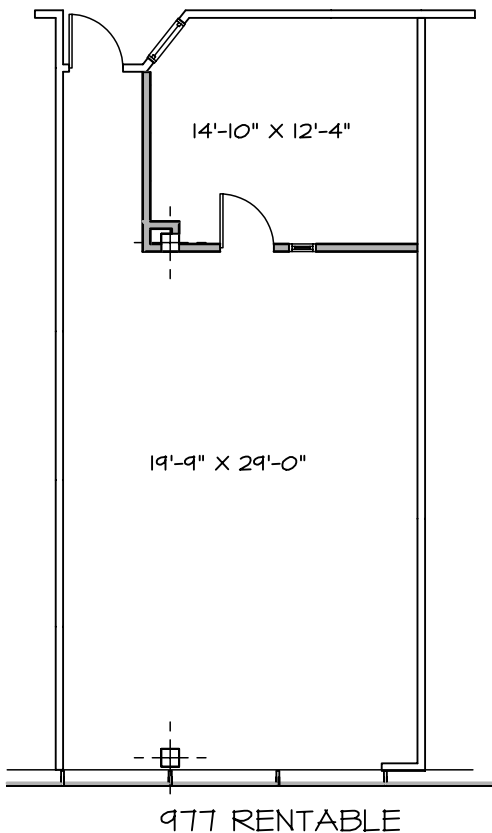
Cell: 248.730.2227

Marcus@RSMDevelopment.com

RSM DEVELOPMENT
& MANAGEMENT

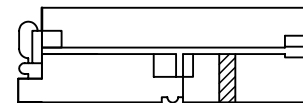


BUILDING CORRIDOR





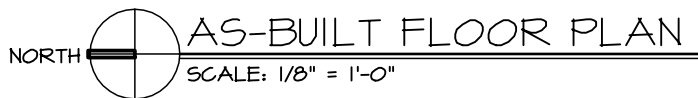
VENTURE
PLAZA

3150 LIVERNOIS
TROY, MI



LEGEND:

-  EXISTING TENANT PARTITION
-  EXISTING DOOR TO REMAIN



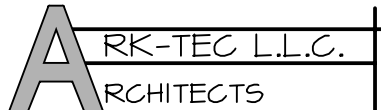
note:
all dimensions are approximate
interior dimensions

SUITE #155

FOR INFORMATION CALL:

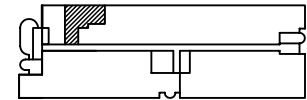
RSM DEVELOPMENT
& MANAGEMENT

C/O SCOTT J. MARCUS
RSM MANAGEMENT
(248) 645-2600

		
UPDATE	12/9/17	17376 W. TWELVE MILE ROAD #105 SOUTHFIELD, MICHIGAN 48076 PH. 248 364 2000
AS-BUILT	9/19/11	

VENTURE PLAZA

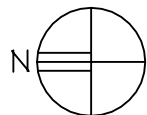
3150 LIVERNOIS
TROY, MI



+/-41'-7"
X
20'-0"

+/-13'-9"
X
14'-0"

BUILDING CORRIDOR



AS-BUILT PLAN: SUITE #310

SCALE: 1/8" = 1'-0"

SUITE #310

AREA: 1,211 RENTABLE SQ. FT.

FOR INFORMATION CALL:

VENTURE PLAZA ASSOCIATES, L.L.C.
C/O SCOTT J. MARCUS
RSM MANAGEMENT
(248) 645-2600

NOTE:

1. ALL DIMENSIONS ARE APPROX.
INTERIOR DIMENSIONS